

## *Welcome to Bowling Green Ohio's Historic District!*

Whether you're a long time resident or a visitor, you can enjoy the beautiful residential and commercial architecture in our city. Tour at your own pace and get some great exercise while taking in the sights!

Our map provides a less-than-2 mile route through the Boomtown Historic District.

## *Boomtown Historic District*

Bowling Green's Boomtown Historic District is made up of 95 residences. Eighteen residences and three significant public buildings are highlighted on the tour. The District was placed on the National Register of Historic Places in May 1987.

Most of the homes were built following two major events in Bowling Green which caused a boom in the growth of the town. The first was the final designation of Bowling Green as the county seat of Wood County in 1875. The second was the discovery of oil and natural gas nearby in 1886.

The central axis of the District is West Wooster Street and includes extensions along several of the streets that intersect it, principally South Church, North Grove, South Grove, Buttonwood, and North Maple. Stylistically, the District is an excellent representation of late 19th and early 20th century architecture. Included are examples of the Italianate, Queen Anne, Eastlake and Colonial/Georgian Revival styles.

Hip and gable roofs dominate, many with slate and red tile still in place. Porches and wraparound verandas abound. Wooden brackets, turned posts and spindles, and decorative wooden shingles are found in great numbers. Leaded, stained glass, and mullion paned windows are also abundant.

As you walk down the tree-lined streets and enjoy the architecture of a century ago, look up at the windows, the eaves, the roofs, the gables. Take in the expressive details and craftsmanship that went into building a home during this period in our history.



## Whitehead House

Bowling Green's purest example of the Colonial Revival style is symmetrical in design and accentuated by two curving porticos on the façade. Palladian and oval windows are found on both levels. A Civil War veteran, Dr. J.H. Whitehead taught school in town before becoming a doctor.



### **Munshower House**

A leading carpenter in Bowling Green, George Munshower built this house in 1895. A pedimented portico ornaments the front façade of this Queen Anne- style house. Turned wood posts and gingerbread brackets support the roof. The first floor front façade features a large the three- sectioned window with carved and scalloped molding. The side entrance and kitchen wing were added in 1950.



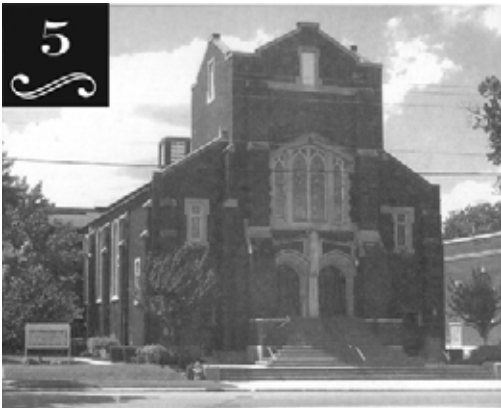
### **Lenhart House**

This house is one of Bowling Green’s most representative examples of the Eastlake style. Its highly ornamental porch has an unusual angled corner. The entrance, facade and gables are decorated with a variety of geometric panels and shingles. C. Lenhart was a deputy sheriff of Wood County.



### **Parker House**

Built in 1891, this Queen Anne – style house is the first duplex in Bowling Green, and is believed to be the first duplex built in Wood County. Of special interest are the perforated wooden cresting on roof ridges with acroteria, the curved glass in the north bay window, and the lattice work arches on the second floor. The two front entrance porches were added around 1940.



### **First Presbyterian Church**

The first church built on the site in 1860 was replaced by a larger church in 1888. After a fire in 1919, the current church was built and dedicated in 1921. Of special interest are the 21 stained glass windows, created by Henry F. Keck in 1938, which feature scenes from the life of Christ. Inside is an impressive pipe organ built by John Leek in 1980.

6



### **Bowling Green Junior High**

This building most recently served as the Bowling Green Junior High building. Along with its attached auditorium, it was built in 1929 as the Senior High school.

7



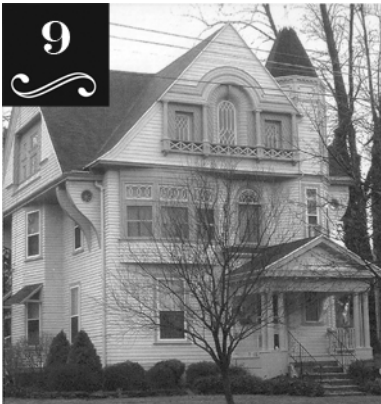
### **Fronney-Millkin-Uhlman House**

The house is an early example of Queen Anne style featuring a variety of roof peaks, many different geometric window moldings, a broad wraparound veranda and large picture windows. The property is still occupied by descendants of William H. Millikin, who built the Millikin Hotel in the Main Street Historic District.



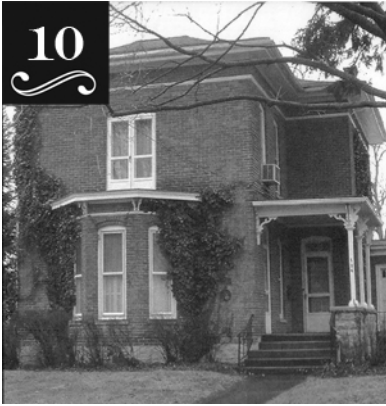
### **Helfrich House**

A fine example of a brick Queen-Anne style residence, the home features a large façade two- storied bay window, brick- faced dormers, and an unusual tin panel lion's head on the eastern elevation. G.W. Helfrich was a successful businessman and manager of the *Wood County Tribune*.



### **Yonkers House**

Built for C.D. Yonker, a prominent local doctor and druggist, this house is a unique variation of Queen Anne design. Note for its squat corner tower, variety of windows, and multiplicity of mullioned window panes, it is Bowling Green's most exuberant expression of Queen Anne architecture.



### **Kuhne- Clayton House**

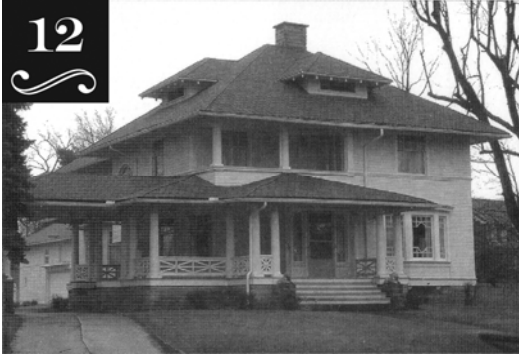
This home is one of Bowling Greens earliest examples of the Italianate style. A relatively modest example of the style, this property features a one- story bay on the façade with simple roof brackets and an original sawn porch. The property has been in the same family for over 100 years.



### **Wood County Detention Home**

The Board of Charities and Corrections built the home for “dependent and incorrigible children” in 1962 to hold 120 juveniles. It included a kitchen, laundry, baths, large dining room, offices, playrooms and two dormitory- style wings for boys and girls. Children living there had lost one or both parents, were abandoned, abused, or the parents were unable to support them. The home closed in 1969 and the building was occupied by the Wood County Health Department for many years.

12  
~



### **Chidester House**

The large frame house is noted for its classically inspired porch, porte-cochere and geometric window millions. A variety of windows shapes (oval, round –arched and bay) are found on all elevations. M. Chidester and his wife were the owners of the popular Chidester Theater on Main Street.

13  
~



### **Cole House**

Dominated by a large wood shingle covered polygonal tower, this is an architecturally correct example of Queen Anne style. The first floor is clapboard with decorative shingles covering the second level. Constructed for businessman L.C. Cole, it was later used as the Wood County Detention Home before the larger building was built at 541 West Wooster Street.



### **Case House**

This house reflects the influence of Eastlake design in its overall simplicity and repeated ornament motifs. The gables feature notched clapboards and incised bulls-eye barge boards. M. Case was a business and civic leader who helped organize one of the town's earliest savings institutions.



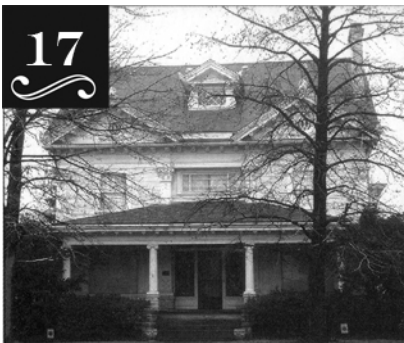
### **Hankey House**

The Hankey House is an expansive example of Queen Anne-architecture noted for its polygonal corner tower, wrap around veranda with porte-cochere and use of stone, brick and wood surfaces. J.R. Hankey was one of the city's most prominent citizens; a banker, builder, state senator, and founder of the Hankey Lumber Company.



### **Curry-Canary House**

The Curry Canary house is an expansive frame example of the Italianate style, dominated by a board over hanging eave that is supported by large brackets. A feature of the façade is the two- stories bay window. John Canary was a well known local attorney and served as mayor in 1872 and 1873.



### **Hickox-Moore House**

This residence is a resplendent example of the Georgian/ Classical Revival style. Wide pilasters with Corinthian capitals define the corners and fluted Ionic columns support a wide porch. It was built for banker J. Hickox and owned for many years by F. Moore of Forney & Co.



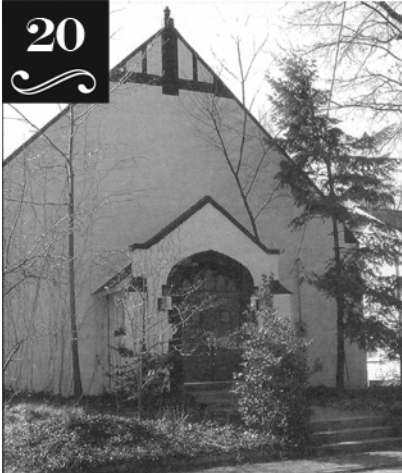
## Cunning House

The front façade of this Queen-Anne style house consists of a three-story gable wall on the left and a one-story elevation on the right where the roof sweeps down from the attic floor to the front porch. The portico is pedimented with simple brackets below the cornice. Double French doors are lined up with the porch gable. The west façade features a large rectangular window embellished with colored glass.



## Newton House

This fully developed representation of the Italianate style is executed in brick and features typical roof brackets, window moldings, louvered shutters and a two-story bay window. For many years this was the home of Capt. B. Newton, a Civil War veteran and community leader.



## St. John's Episcopal Church

The church was built in 1916 and except for the west wall, which is not visible from the street, has not been altered on the outside. In 1932, it was deeded to the Church of the Nazarene. It became a private residence in 1974. The south wall has four bays separated by flat buttresses.



## James House

The windows are framed by arched moldings with keystones. The mansard roof cornice brackets display the Greek acanthus motif. The porch probably was originally wood but now has foliated wrought iron supports and railing. Benjamin James, an attorney, served in the Ohio General Assembly.

## **Other Historic Sites in Bowling Green Ohio**

### **WOOD COUNTY HISTORICAL CENTER & MUSEUM**

The Wood County Historical Center & Museum at 13660 County Home Road is located on the grounds of the former Wood County Infirmary, built in 1868 and commonly referred to as the “Home”. This unique site is one of the last county infirmaries- also called poor farms –where nearly all of the original structures still stand. The Center is dedicated to showcasing the history of the Home and of Wood County through exhibits, educational programs, special events, and research.

### **DONZEY HOUSE**

The Donzey House at the southwest corner of East Wooster and Crim Streets is the oldest standing building in Bowling Green. Built in 1838 of locally quarried stone, it is now covered by stucco and has been remodeled several times, including the addition of a porch and rear shed and a change in the windows. The house, also known as the Crim Place, was built by a Frenchman named Donzey.

### **LOCKE’S STORE**

L.C. Locke is credited with establishing the business center with one of Bowling Green’s first factories, an ashery. Locke built a combined home and store on his land, and having secured an appointment as postmaster of Bowling Green, transferred the post office to his new store at 139 South Main Street. Encouraged by Locke’s success, other merchants congregated nearby, making the area the business center.

### **HANNON’S TRAVERN AND BLACKSMITH STOP**

John Hannon established a tavern, inn, and blacksmith shop at the southwest corner of North Main Street and Poe Road. The area became known as Hannon’s Corner.

### **KNAUSS TOWER**

This three- story brick tower was erected in the barnyard at 17103 North Dixie Highway (about one mile north of Bowling Green) to enclose a tank to store water for the farm. The structure, which cost \$500, has brick walls 18 inches thick and is now used for storage.

### **MARTINDALE CABIN**

The first cabin in Bowling Green was erected in March and April 1833 on a sand knoll on acreage claimed by Elisha Martindale, the first Bowling Green settler. The cabin still stands behind the home now located at 625 Haskins Road.

### **WALKER- STAUFFER CABLIN**

The town’s first post office was located in this cabin near the northeast corner of Merry Avenue and North Main Street. This cabin still stands, now hidden by weather boards, as the one- story rear portion of the Halleck house.

*This brochure was adapted from one created by The Boomtown Preservation Society, Main Street Bowling Green, the Wood County Health District, the Leadership BG Class of 2003, and the Bowling Green Convention and Visitors Bureau. It was funded in part by a grant administered by the Bowling Green Community Foundation.*